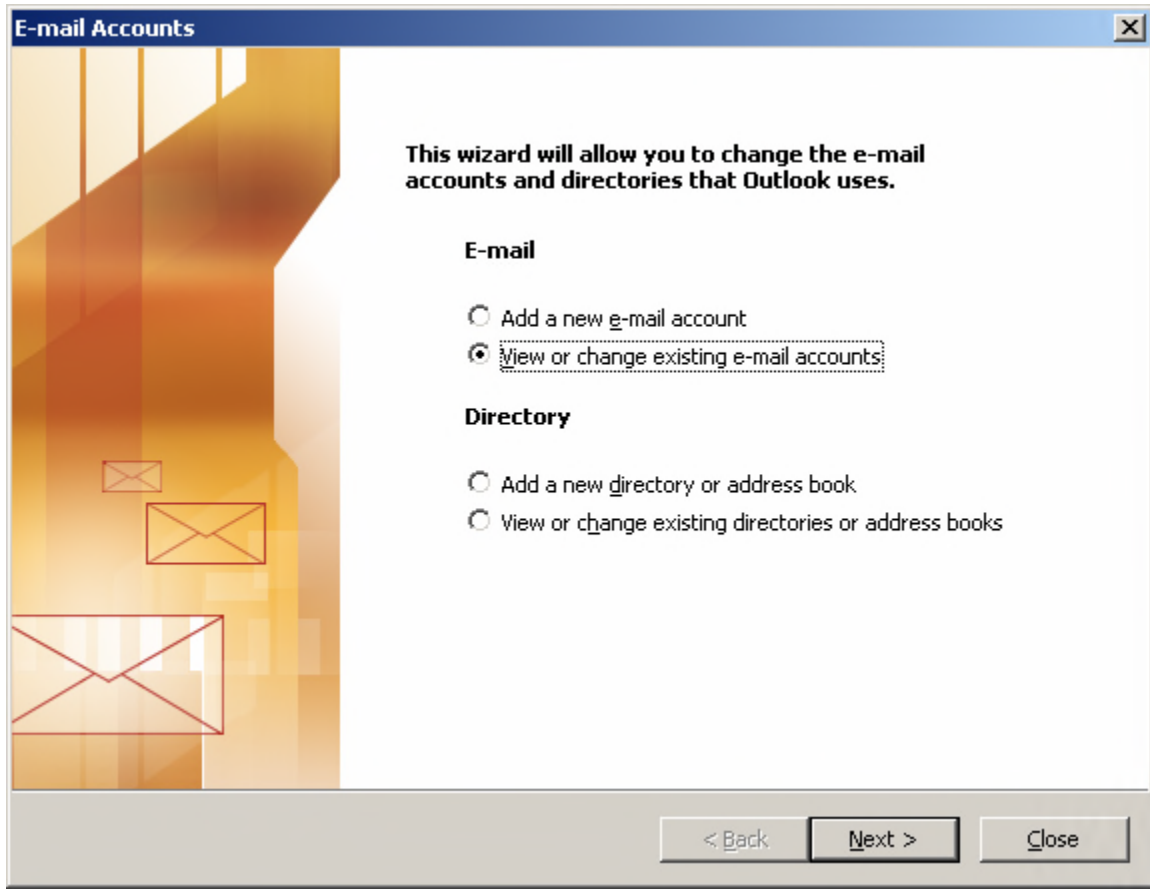


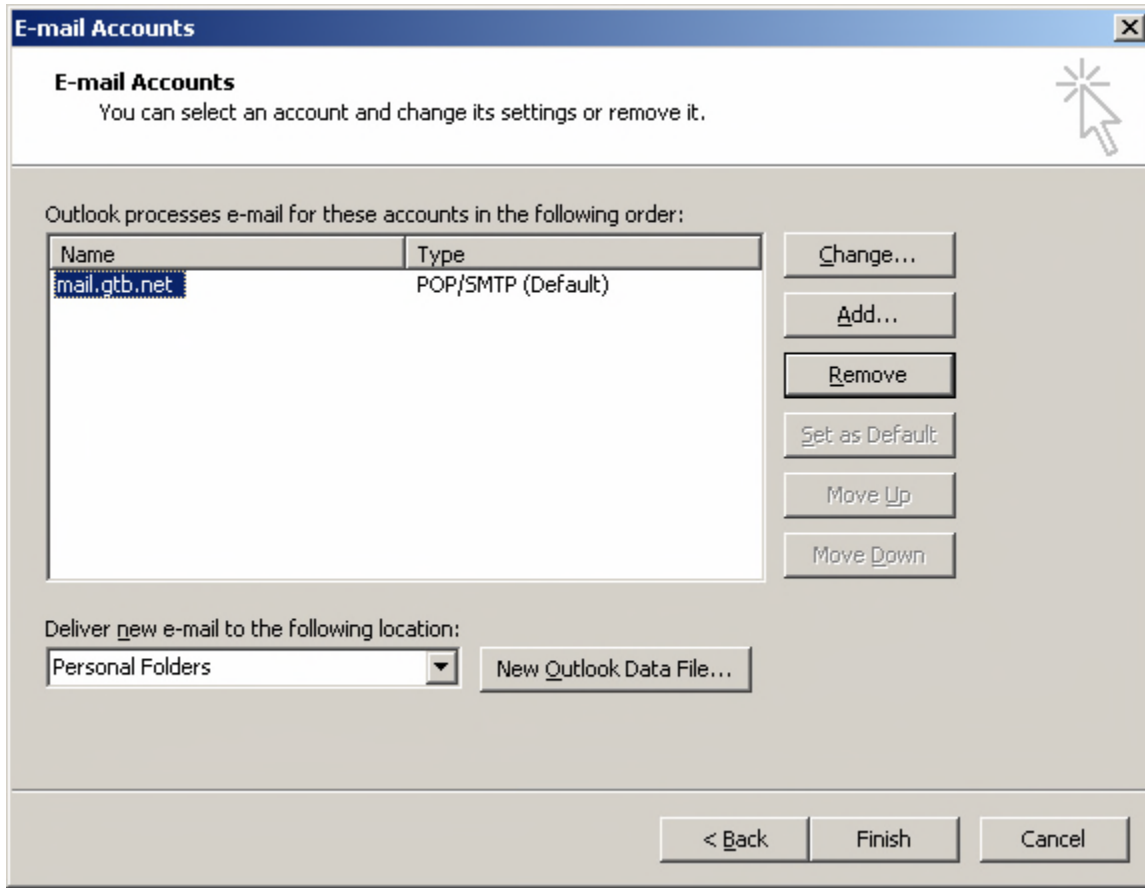


Enabling SMTP Authentication with Outlook 2003

1. Open up Outlook
2. Go to the Tools Menu, E-mail Accounts



3. You'll want to select "View or change existing e-mail accounts" and hit next



4. Now, you will want to highlight your default GTB account (or your other domain that you have through GTB) and hit "Change"

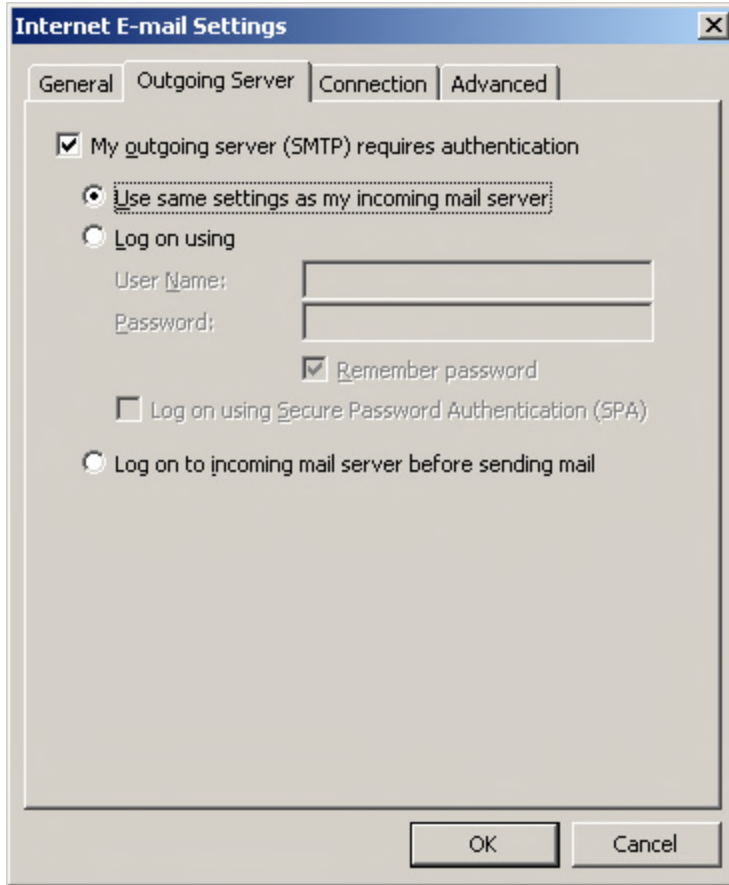


The screenshot shows a Windows-style dialog box titled "E-mail Accounts" with a close button (X) in the top right corner. Below the title bar, the text "Internet E-mail Settings (POP3)" is displayed, followed by the instruction "Each of these settings are required to get your e-mail account working." A mouse cursor is pointing at a starburst icon in the top right area. The dialog is divided into four sections: "User Information" with fields for "Your Name" (containing "Your Full Name") and "E-mail Address" (containing "you@gtb.net"); "Server Information" with fields for "Incoming mail server (POP3)" and "Outgoing mail server (SMTP)", both containing "mail.gtb.net"; "Logon Information" with fields for "User Name" (containing "you@gtb.net") and "Password" (containing "*****"), a checked "Remember password" checkbox, and an unchecked "Log on using Secure Password Authentication (SPA)" checkbox; and "Test Settings" with a text block explaining the test button and a "Test Account Settings ..." button. A "More Settings ..." button is located at the bottom right of the main content area. At the very bottom of the dialog are three buttons: "< Back", "Next >", and "Cancel".

5. As long as you have an account already setup, you won't need to make any changes on this screen. You will need to go to "More Settings" to verify the smtp authentication setup.
6. You will need to go to the "Outgoing Server" tab which is the second from the left on top of the screen.



Delivering Beyond Small-Talk



7. Check the box that says "My outgoing server (SMTP) requires authentication" and "Use same settings as my incoming mail server"

8. Hit "OK" on this screen and "Next" on the main screen to complete the process.